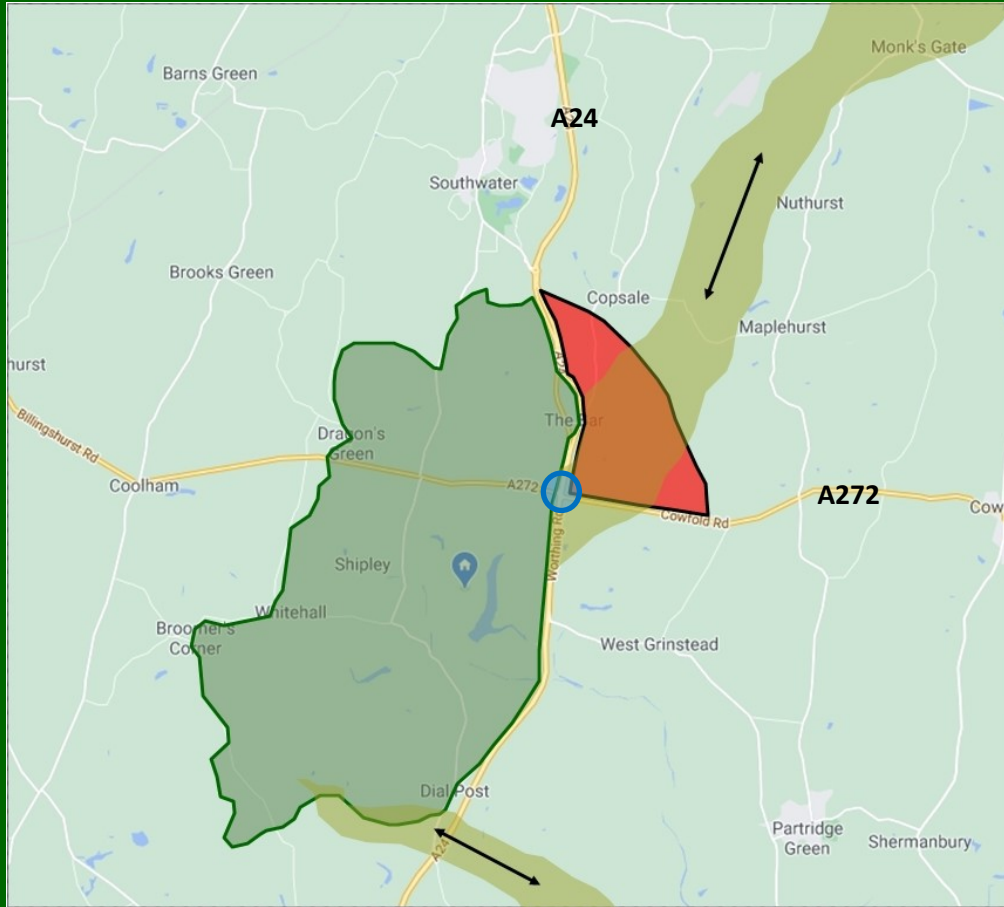




Buck Barn development blocks key wildlife corridor

Stop 3,500 houses at Buck Barn



- Knepp Rewilding project
- Proposed Buck Barn development
- Key Wildlife Corridors linking Knepp to St Leonard's Forest in Horsham
- Buck Barn crossing where the A24 meets the A272 (McDonald's drive thru)

The development of 3,500 houses at Buck Barn would not only increase pollution and traffic congestion in the area. Crucially it would cut off a key wildlife corridor linking Knepp-one of our country's most significant sites for nature-and St Leonard's forest.



Your local Councillors are due to make an irreversible decision to build an unsustainable development at Buck Barn.

It's Round 2! Time for you to contact the decision makers

(Signing the petition is not enough)

ACT NOW!

Tell your local Councillors using the link below

- It takes less time than making a cuppa to tell the decision makers to say **NO** to the development at Buck Barn.
- The link will take you to a ready-made letter to send in your own name at the click of a button.
- <http://savewestgrinstead.eaction.org.uk/action>

